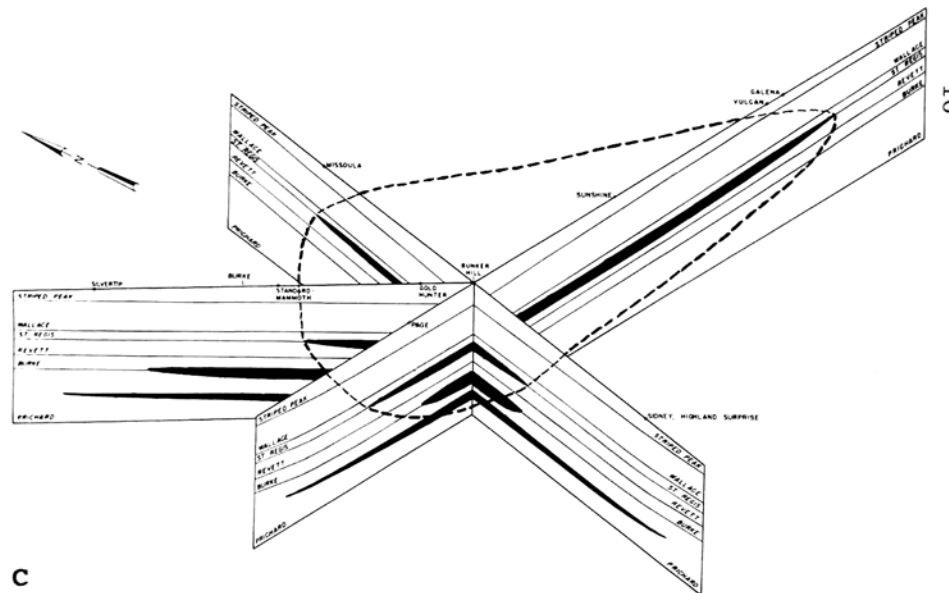
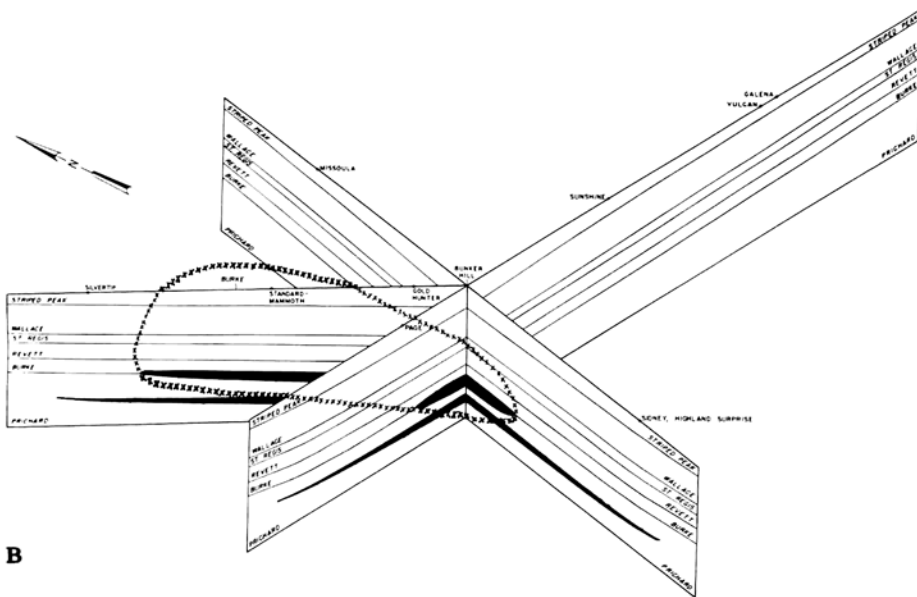


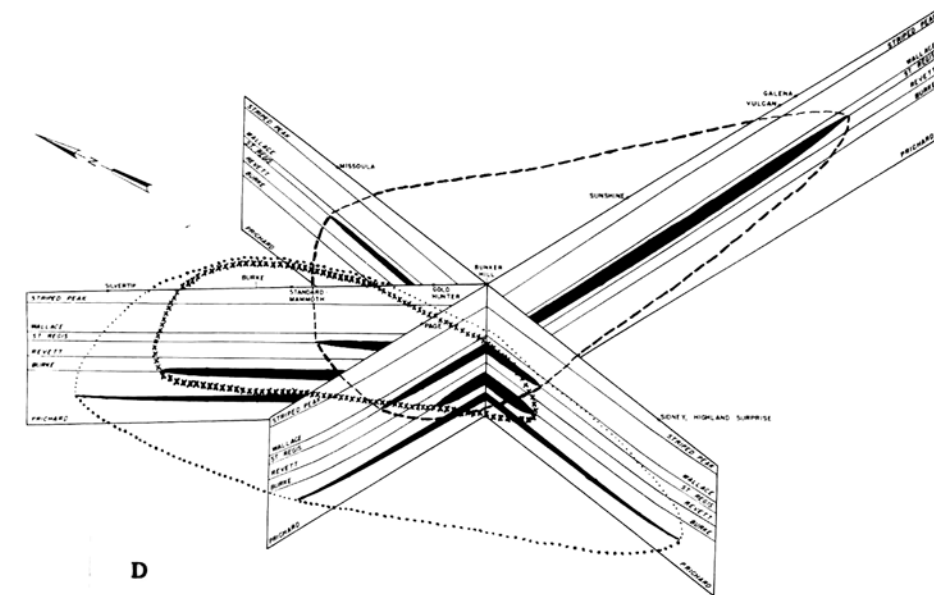
A



C



B



D

Figure 3. Formation of mineralized horizons in the Coeur d'Alene district. Mineralization shown in black. (A) Generalized outline of the Middle Prichard basin, prefolding and faulting. (B) Generalized outline of the Prichard-Burke basin, prefolding and faulting. (C) Generalized outline of the Revett-St. Regis basin, prefolding and faulting. (D) Generalized outline of the Middle Prichard, Prichard-Burke, and Revett-St. Regis basins, prefolding and faulting.