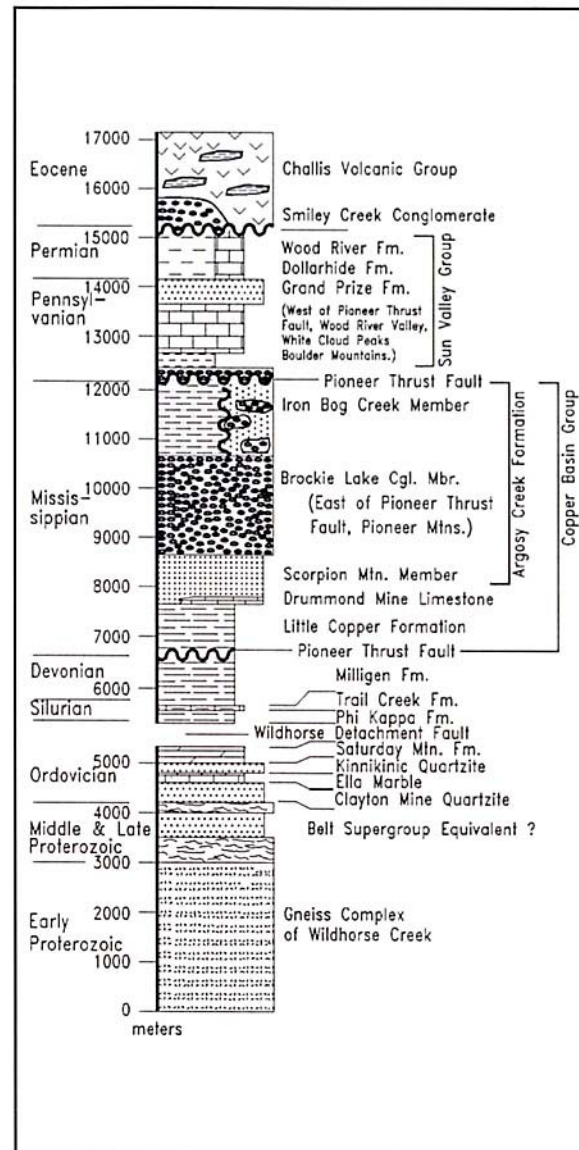


Composite stratigraphic column for the northern Portneuf and Bannock Ranges. Thicknesses from Trimble (1976), Link and LeFebre (1983), and Pogue (1984).

Stratigraphy south of the Snake River Plain.



Composite stratigraphic column for the Pioneer Mountains west of Mackay (after Link and Hackett, 1988; Link and others, 1992; Link and others, 1996).

Stratigraphy north of the Snake River Plain